

RINGO / WEST

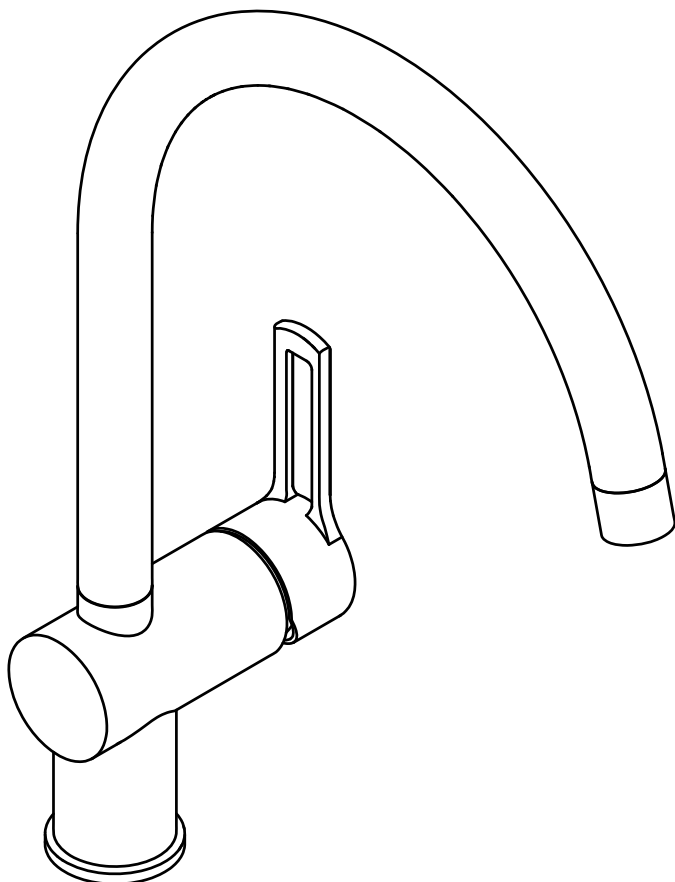
RIN 180.. WS 180..

RIN 980.. WS 980..

RIN 184.. WS 184..

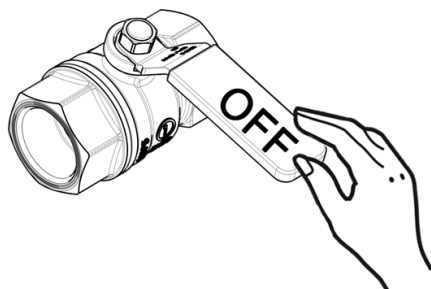
RIN 185.. WS 185..

RIN 285.. WS 285..



1

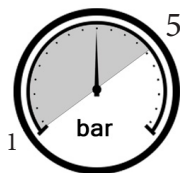
Montaggio Assembly



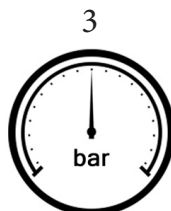
$65 \pm 5^{\circ}\text{C}$



$15 \pm 5^{\circ}\text{C}$



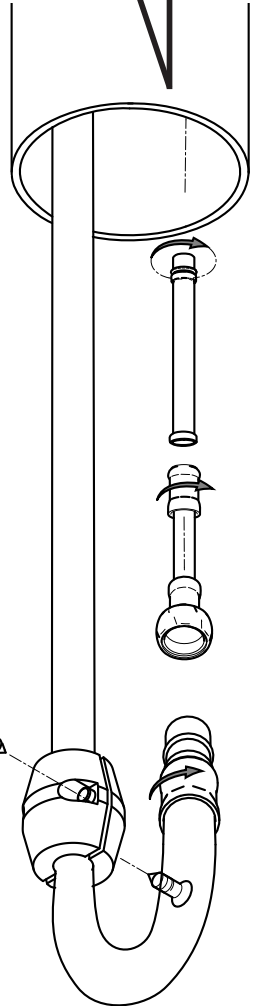
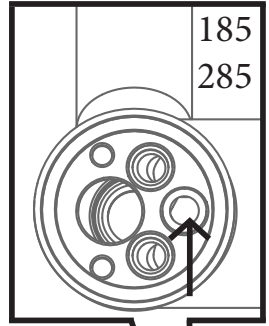
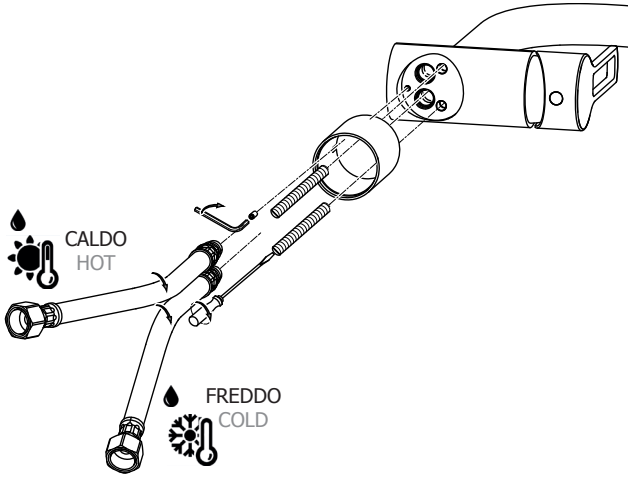
MIN - MAX



OK

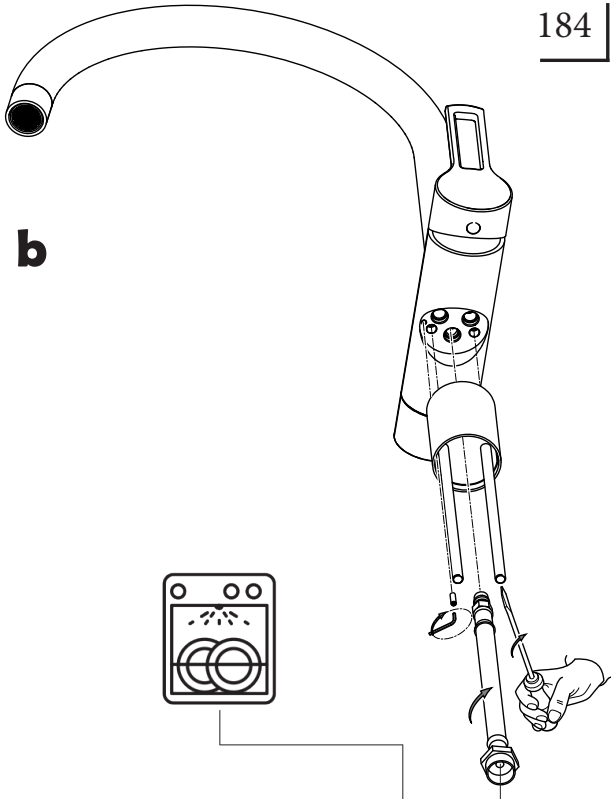
2 a

180 980 184 185 285



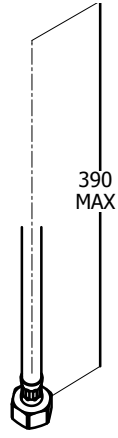
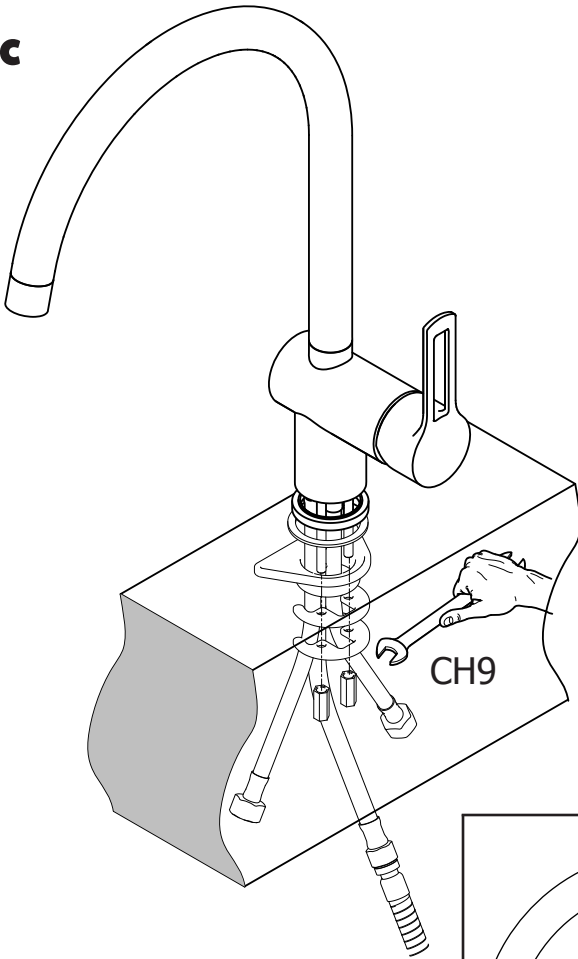
b

184

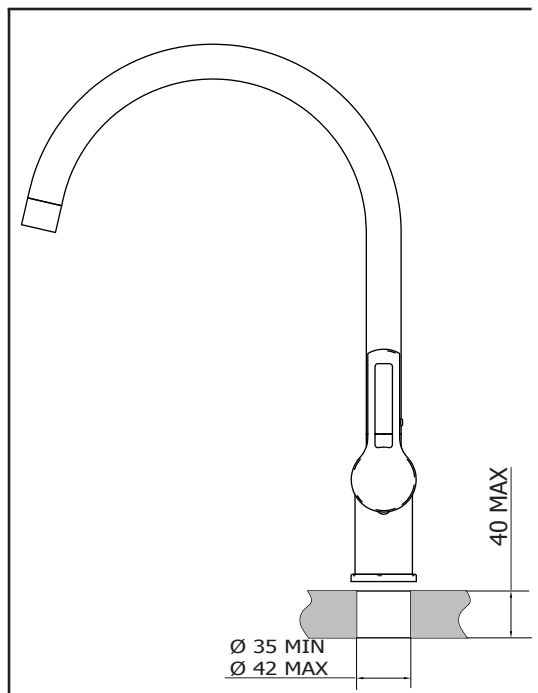


C

180 980 184 185 285



G 3/8"

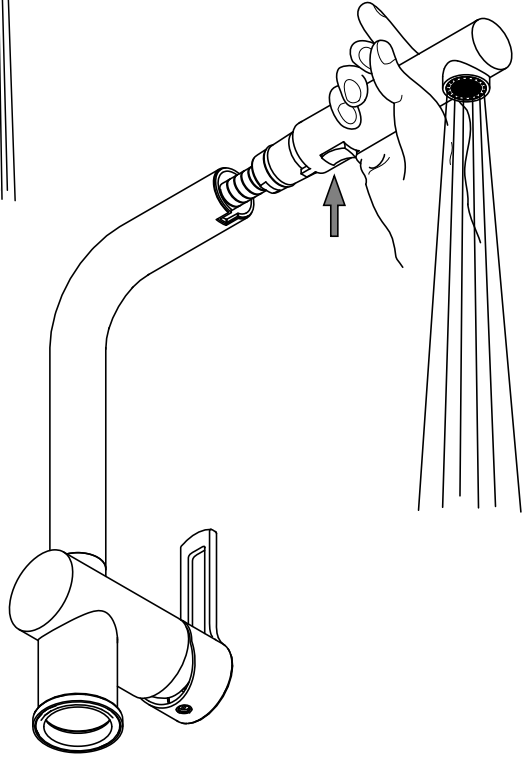
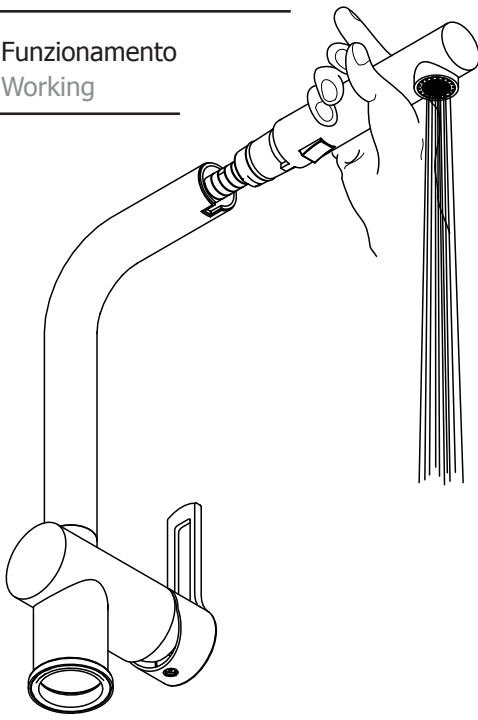


Ø 35 MIN
Ø 42 MAX

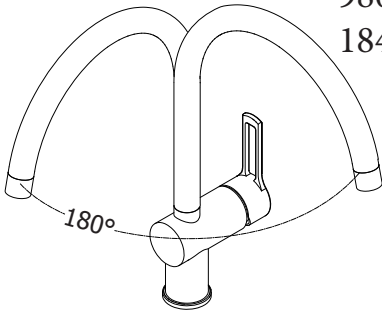
Funzionamento
Working

185 285

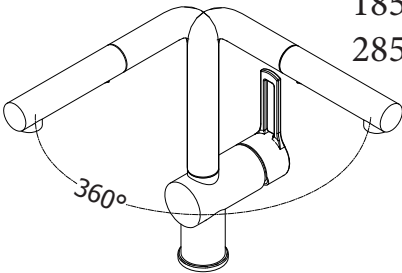
285



180
980
184

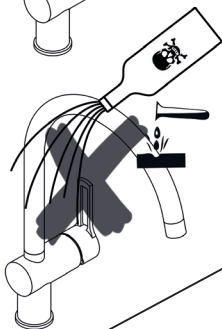
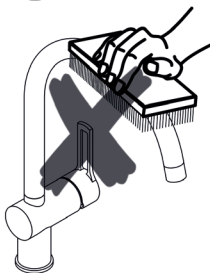
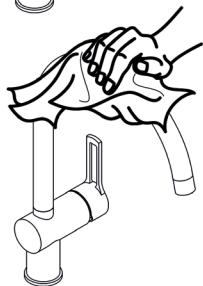
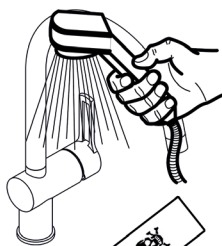
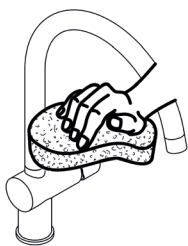
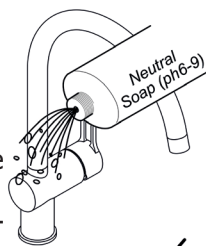


185
285



M

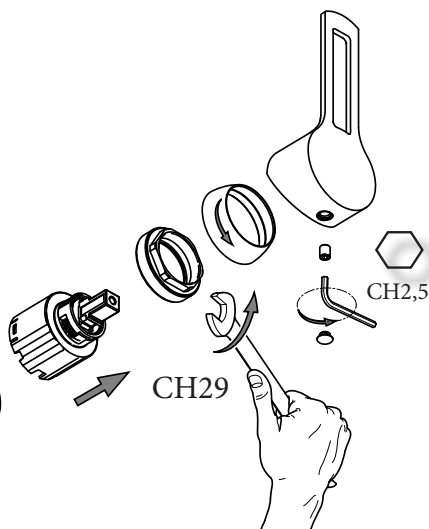
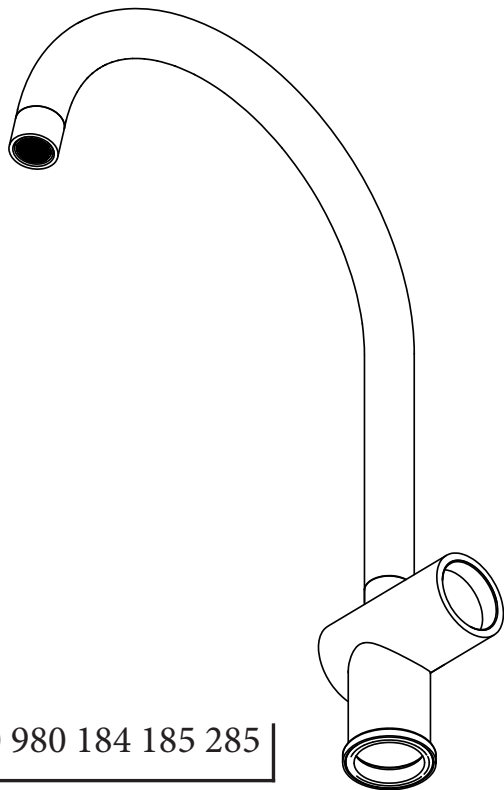
Manutenzione
Service



S

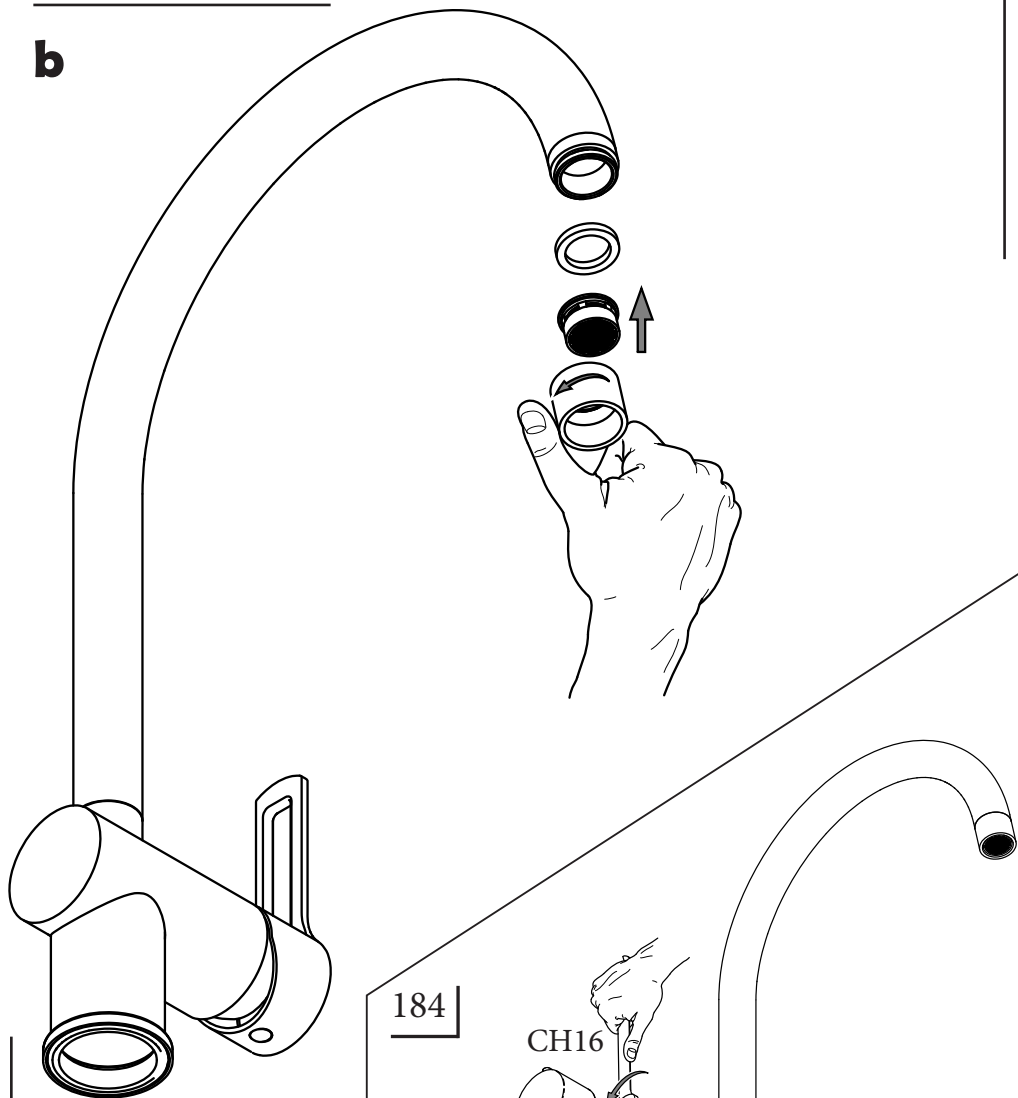
Sostituzione Cartuccia
How to replace Cartridge

a



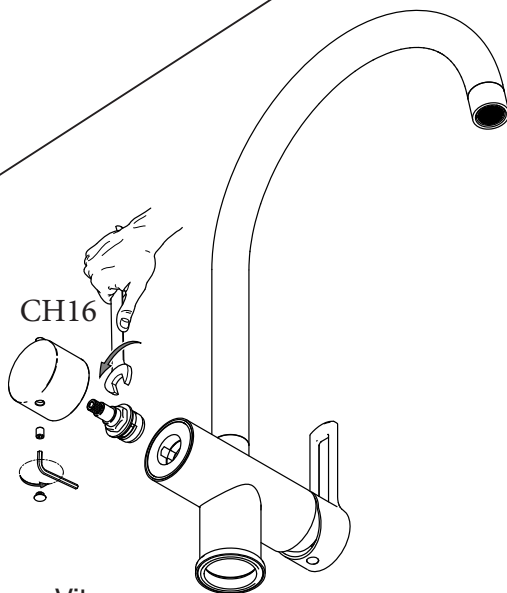
180 980 184 185 285

b



184

c

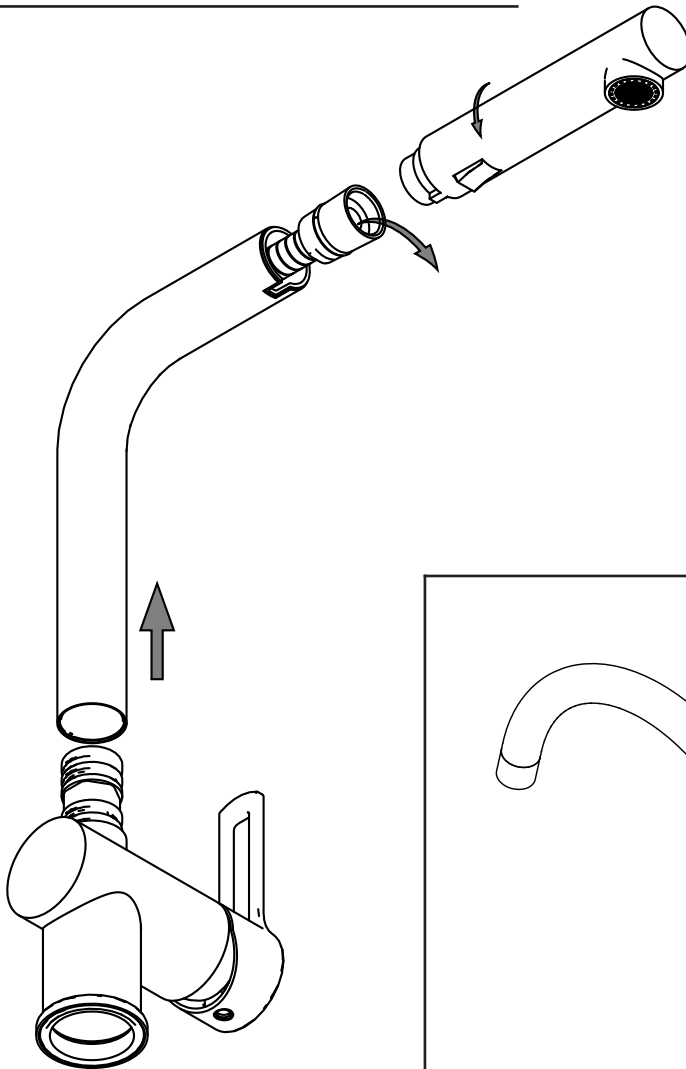


Sostituzione Vitone
How to replace Ceramic Disc Valve

Sostituzione Flex Nylon e Doccetta
How to replace Flex Nylon and Hand Shower

185
285

d



180
980
184

e

Sostituzione Canna
How to replace Spout

